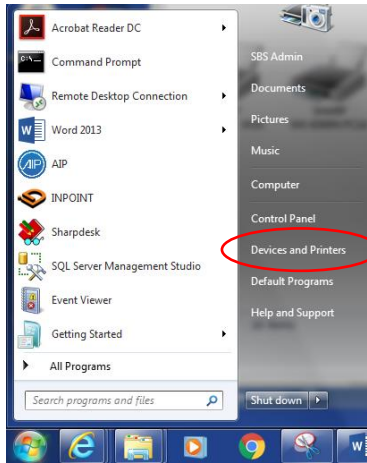
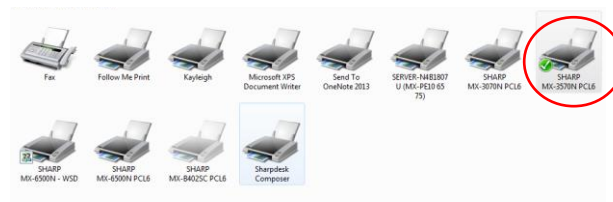


Setting Print Drivers to default to Black and White on a Sharp Multi-Function Printer (Windows 7)



Use the Windows Start Menu to navigate to the **“Devices and Printers”** menu in the Control Panel



Right Click on the device Print Diver and select **Printing Preferences**.

Select the **“Color”** tab or the **“Main”** tab (depending on which interface you have, see below). Select **“Black and White”** under the **Color Mode** function. Select **“Apply”** and then **“OK”**. Your printer will now default to Black & White unless color mode is specifically selected when printing a project.

